

# Mepilex® Ag

## Antimicrobial absorbent foam dressing

### Polyurethane foam pad

- Absorbs exudate<sup>1</sup>
- Conformable<sup>2</sup>



- Antimicrobial activity within 30 minutes (*in vitro*), up to 7 days (*in vitro*) and inactivates a wide range of wound-relevant microorganisms (*in vitro*)<sup>3-7</sup>

### Polyurethane backing film

- Breathable<sup>8-10</sup>
- Water-proof
- Viral and bacteria proof\*<sup>11-13</sup>

\* microbes larger than 25 nm

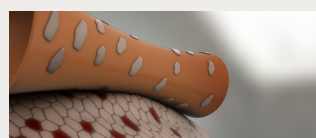
### Safetac® layer

- Minimises trauma to the wound bed and the surrounding skin and pain to the patient upon removal<sup>2,8,14,15</sup>
- Does not adhere to moist wound bed<sup>2,8,9,14,15,16</sup>
- Minimises risk of maceration<sup>9,15</sup>

### Safetac® technology. Less trauma. Less pain

In numerous randomised trials, dressings with Safetac® are clinically demonstrated to minimise damage to the wound and skin at removal. By sealing the wound margins, they help prevent maceration. With less damage to the wound and skin, pain at dressing change is minimised. Therefore, several randomised trials associate dressings with Safetac with faster healing and lower total treatment cost.

Read more at [www.molnlycke.com/ref/safetac](http://www.molnlycke.com/ref/safetac)



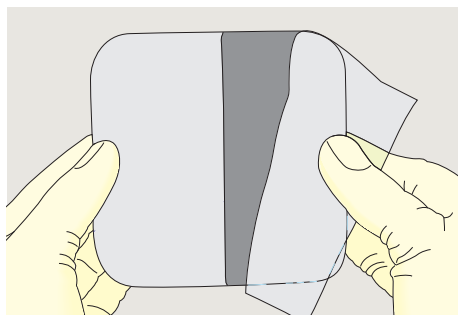
Without Safetac



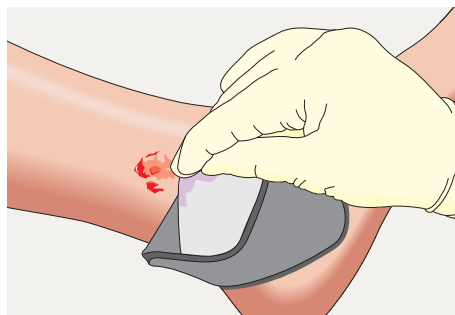
With Safetac

- Minimises pain and trauma at dressing changes<sup>2,8,14,15</sup>
- Delivers antimicrobial activity within 30 minutes (*in vitro*), up to 7 days (*in vitro*) and inactivates a wide range of wound-relevant microorganisms (*in vitro*)<sup>3-8, 17</sup>
- Is conformable and promotes patient comfort during wear<sup>2,9</sup>
- Easy to handle and reposition<sup>8, 18</sup>

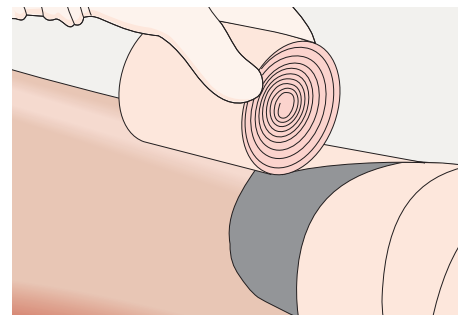
## How to use Mepilex® Ag



1. Cleanse the wound with saline solution or water according to standard clinical practice. Dry the surrounding skin thoroughly.



2. Select appropriate dressing size. For best clinical outcomes, ensure that the product covers the wound bed and overlaps the wound edges. Cut to appropriate size (if needed). Remove the release films and apply the adherent side to the wound. Do not stretch.



3. When necessary, fixate Mepilex Ag with a bandage or other fixation.

## Benefits of Mepilex Ag

- Minimises pain and trauma at dressing changes<sup>2,8,14,15</sup>
- Promotes patient comfort during wear<sup>2,9</sup>
- May be left in place for seven days depending on condition of the wound and surrounding skin or as indicated by accepted clinical practice<sup>2,14</sup>
- Can be lifted and adjusted without losing its adherent properties<sup>18,19</sup>
- Is non-sensitising<sup>9</sup>

## How Mepilex Ag works

Mepilex Ag is a soft and conformable antimicrobial foam dressing that absorbs exudate<sup>1</sup>, and maintains a moist wound environment<sup>8-10</sup>. The Safetac® layer seals the wound edges, preventing leakage of exudate on to the surrounding skin, thus minimising the risk of maceration. The Safetac layer minimises trauma to the wound bed and the surrounding skin upon removal and pain to the patient<sup>2,8,14,15</sup>.

Mepilex Ag delivers a antimicrobial activity within 30 minutes (*in vitro*), up to 7 days (*in vitro*) and inactivates a wide range of wound-relevant microorganisms (*in vitro*).

## Areas of use

Mepilex Ag is an antimicrobial soft silicone foam dressing that is designed for the management of low to moderately exuding leg and foot ulcers, pressure ulcers and partial thickness burns.

Mepilex Ag may be used on infected wounds as part of a treatment regimen under supervision of a qualified health care professional.

Mepilex Ag can be used under compression bandaging.

## Mepilex Ag assortment (Sterile packed)

Art. No.	Size cm	Size inch	Pcs/shelf cont	Pcs/transp. cont.
287110	10 x 10	4 x 4	5	70
287210	10 x 20	4 x 8	5	45
287310	15 x 15	6 x 6	5	35
287410	20 x 20	8 x 8	5	25
287500	20 x 50	8 x 20	2	10

Note: Not all articles are available in every country. Please contact your local Mölnlycke Health Care representative for information about articles available in your country.

**References:** 1. Schumann H, Apelqvist J, Schmidtchen A, Hansson C. Open, non-comparative, multicentre investigation exploring the tolerance of an absorbent foam dressing containing silver used in chronic wounds. Poster presented at the European Wound Management Association Conference, Glasgow, United Kingdom, 2007. 2. Silverstein P, Heimbach D, Meites H, Latenser B, Mozingo D, Mullins F, et al. An open, parallel, randomized, comparative, multicenter study to evaluate the cost-effectiveness, performance, tolerance, and safety of a silver-containing soft silicone foam dressing (intervention) vs silver sulfadiazine cream. *Journal of Burn Care & Research* 2011;32(6):617-626. 3. Chadwick P, Taherinejad F, Hamberg K, Waring M. Clinical and scientific data on a silver-containing soft-silicone foam dressing: an overview. *Journal of Wound Care* 2009;18(11):483-491. 4. Mölnlycke Health Care. Mepilex Ag: Determining antimicrobial activity of immobilized antimicrobial agents (ASTM-E2149-01) (NAMSA). Data on file, 2006. 5. Mölnlycke Health Care. Determination of sustained antimicrobial effect of Mepilex Ag using CZOI (Clinical Bacteriology). Data on file, 2006. 6. Mölnlycke Health Care. Sustained antimicrobial effect up to 8 days in ASTM-E2149-01. Data on file, 2007. 7. Mölnlycke Health Care. Antimicrobial activity against a broad range of bacteria and fungi. Data on file, 2007. 8. Gee Kee EL, Kimble RM, Cuttle L, Khan A, Stockton KA. Randomized controlled trial of three burns dressings for partial thickness burns in children. *Burns* 2015;41(5):946-955. 9. Budkevich LI, Mirzoiyan GV, Astamirova TS. Use of Mepilex Ag silver-containing dressing in the topical treatment of children with thermal injury. *Khirurgiia* 2010(9):57-60. 10. Mölnlycke Health Care. T-1069 (SS-EN 13726-1) Free swell absorptive capacity and T-1068 (SS-EN 13726-1) Fluid handling capacity. Data on file, 2008. 11. Mölnlycke Health Care. T-1086 (SS-EN 13726-4) Conformability and T-1083 (SS-EN 13726-3) Waterproofness. Data on file, 2017. 12. Mölnlycke Health Care. Viral Penetration Test, ASTM 1671 (Nelson laboratories). Data on file, 2006. 13. Mölnlycke Health Care. Statement towards ASTM F1671. Data on file, 2010. 14. Tang H, Lv G, Fu J, Niu X, Li Y, Zhang M, et al. An open, parallel, randomized, comparative, multicenter investigation evaluating the efficacy and tolerability of Mepilex Ag versus silver sulfadiazine in the treatment of deep partial-thickness burn injuries. *Journal of Trauma and Acute Care Surgery* 2015;78(5):1000-1007. 15. Richards K, Chadwick P. Addressing local wound infection with a silver-containing, soft silicone foam dressing: a case series. *The Diabetic Foot Journal* 2011;14(2):90-95. 16. Eytier C, Gazeau E, Beneteau G, Verfaillie G. Ease of use and safety of the combination of a soft silicone foam dressing range and a two-way stretch tubular bandage in the management of local wounds. An observational study conducted among 304 registered nurses (RNs) on 2401 patients. Results of the TeMpO study. *Journal des plaies et cicatrisations* 2013;18(8):38-44. 17. Rigo C, Roman M, Munivrana I, Vindigni V, Azzena B, Barbante C, et al. Characterization and evaluation of silver release from four different dressings used in burns care. *Burns* 2012;38(8):1131-1142. 18. Waring M, Biefeldt S, Matzold KP, Butcher M. An evaluation of the skin stripping of wound dressing adhesives. *Journal of Wound Care* 2011;20(9):412-422. 19. Mölnlycke Health Care. T-304 Tape test on human back. Data on file, 2017. 20. Mölnlycke Health Care. Mepilex Ag Test for delayed contact hypersensitivity using the guinea pig maximisation test (internal documentation based on external tests). Data on file, 2014.

Find out more at [www.molnlycke.com](http://www.molnlycke.com)

Mölnlycke Health Care AB, P.O. Box 13080, Gamlestadsvägen 3 C, SE-402 52 Göteborg, Sweden. Phone + 46 31 722 30 00. The Mölnlycke, Mepilex and Safetac trademarks, names and logos are registered globally to one or more of the Mölnlycke Health Care group of companies. © 2022 Mölnlycke Health Care AB. All rights reserved. HQIM003879

**Mölnlycke®**